

WYCHBURY

RESIDENTIAL CARE HOME



350-2 HAGLEY ROAD
PEDMORE
STOURBRIDGE
WEST MIDLANDS
DY9 0QY

CARE: 01562 885106
ADMIN/FAX: 01562 883358
RESIDENTS: 01562 886417
EMAIL: ENQUIRIES@WYCHCARE.COM
WYCHCARE.COM



TAKING IT FURTHER

If you feel that Wychbury offers you or your loved one everything needed to make a new home, just give us a call and we will be happy to arrange a visit so you can meet the staff and residents and inspect the high quality of care and accommodation we have to offer. Or if you require further information with more details about the home we would be more than happy to send you a pack with the most recent inspection report.



The PRIORY

RESIDENTIAL CARE HOME



CRUTCH LANE
DODDERHILL
DROITWICH SPA
WORCESTERSHIRE
WR9 0BE

TEL: 01905 771595
FAX: 01905 796038
EMAIL: ENQUIRIES@WYCHCARE.COM
WYCHCARE.COM



YOUR ALTERNATIVE HOME

Situated near Droitwich Spa and a few minutes away from the M5, The Priory Residential Care Home offers all the same fantastic family values of Wychbury. Catering for up to thirty long-term residents this delightful former vicarage offers rooms over two floors, most with en-suite facilities.

WYCHBURY

RESIDENTIAL CARE HOME



PART OF
WYCHBURY
CARE SERVICES LIMITED

CARE FOR THE ELDERLY BY A FAMILY WHO CARES

CARE FOR THE ELDERLY BY A FAMILY WHO CARES

Welcome TO WYCHBURY

Wychbury Residential Care Home is situated at the foot of Wychbury Hill, near Hagley in the West Midlands, providing residential care for over 65's. The home was established in 1983 by the Johnson family, who still own and run the home, in half of the 19th century 'Wychbury Villas'. Today we occupy both halves of the villa and the adjoining Coach House, which is designed for the independently mobile.



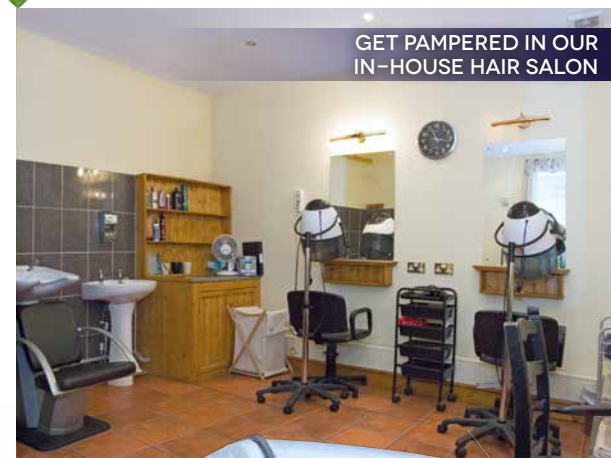
The total accommodation is spread over three floors of this period property, which is made up of varying sized rooms to accommodate most needs. It is comprised of thirty nine single rooms and two companion rooms, all with en-suite facilities, a 'nursecall' system, intercom and furnished to a high standard.

We believe the home you select should free you from all the worries and ties of maintaining your own home and more importantly reflect your life and interests. To that end we understand the upheaval that changing your home causes, we make every effort to make the transition as stress-free as possible. Our family of around thirty carers will help ensure you quickly settle in and feel secure in your new home.

Your independence and individuality is important to you and us, and we encourage you to bring along as many personal possessions that we are able to accommodate to make your new home your own. The range of room sizes we offer are all unique, and many can be arranged to suit individual layout requirements.

NUTRITION

Nutrition is a high priority at Wychbury and we spare no expense in maintaining high standards of cooking and ingredients. Our chefs take pride in cooking wholesome food, using fresh local ingredients, that provides a varied menu whilst also catering for special dietary needs. The choice is yours whether you eat with other residents in the dining room or have it provided in your room on request.



“THANK YOU VERY MUCH FOR
THE LOVELY BOUQUET OF
FLOWERS AND CARD SENT FOR
SARAH'S 100TH BIRTHDAY...
...AND FOR THE WONDERFUL
PARTY, ENJOYED BY ALL...
...ALSO FOR THE
FRIENDLY ATMOSPHERE AND
EXCELLENT CARE YOU GIVE”

SOCIALISING AND ACTIVITIES

Wychbury is your home and as such we welcome you to have your family and friends visit at any time. You can entertain visitors in your room, chat in peace in our one of our quieter lounges or in the more communal conservatory lounge which overlooks the terrace, or simply take a stroll around the well-tended garden.

Our residents are free to come and go, often joining friends and family on excursions, meals out and holidays. We also offer days out throughout the year making use of our own minibus. There are also plenty of opportunities to make friends with other residents and staff are there on hand to sit and chat.

At Wychbury we encourage you to pursue hobbies and interests. For instance, if you enjoy gardening, you can adopt an area in the garden to look after. We regularly arrange events, excursions and activities for you to partake of, but we respect your wishes if you feel you do not wish to take part. There are plenty of local amenities at hand whether you want to visit a pub, eat out, or want an outing to a park. There are also excellent bus services to take you further afield, for shopping trips to Merry Hill or to get out in the fresh air on the Clent Hills which is a stones throw away. These opportunities means you need never be without something interesting to do.

FACILITIES AND SERVICES

Our facilities include a fully equipped hair salon, where our residents can be pampered and preened. We have regular visits from local health care professionals such as opticians, chiropodists, occupational therapists and dentists whose services are offered at very competitive prices. You can also keep your existing GP, if they are willing, or simply transfer to a local GP through our care manager. Newspapers are provided in the communal lounge, however, we can arrange for your own paper to be delivered.